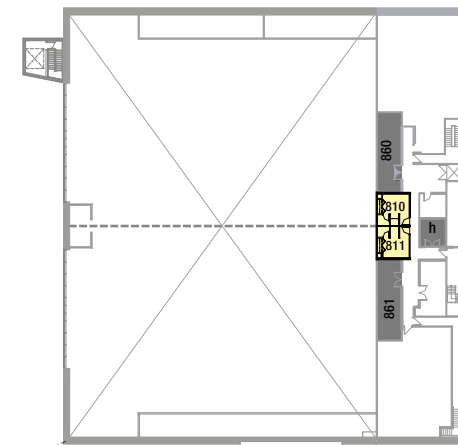


SPACES	Theater (people)	Banquet (10 people/table)	Classroom (3 people/table)	Reception (people)	Stand (10 x 10)	Width (meters)	Length (meters)	Height (meters)	Width (feet)	Length (feet)	Height (feet)	Surface (square meters)	Surface (square feet)
710 Prefunction	-	-	-	652	21	-	-	-	-	-	-	605	6,515
710ab	1,909	1,210	1,308	1,909	98	47	39.2	6.7	154' 6"	128' 7"	22' 1"	1,856	19,975
710a	1,220	600	660	1,220	52	24	39.2	6.7	77' 1"	128' 7"	22' 1"	957	10,300
710b	960	600	660	960	48	24	39.2	6.7	77' 1"	128' 7"	22' 1"	899	9,675
720 Atrium	-	350	-	630	-	-	-	-	-	-	-	558	6,328
730 VIP*	-	-	-	50	-	-	-	-	-	-	-	142	1,528
Outdoors													
715 Belvedere	-	-	-	751	-	45	13.3	-	43' 9"	148' 10"	-	621	6,688
Terrace and Garden	-	-	-	-	-	-	-	-	-	-	-	1,818	19,575
725 Terrace	-	250	-	630	-	18.3	18.3	6.4	60'	60'	21'	1,089	11,727
Marquee	-	250	-	360	-	-	-	-	-	-	-	334	3,600
Excluding Marquee Area	-	-	-	270	-	-	-	-	-	-	-	755	8,127
Total maximum capacity	1,909	1,909	1,909	1,909	122							4,902	52,761

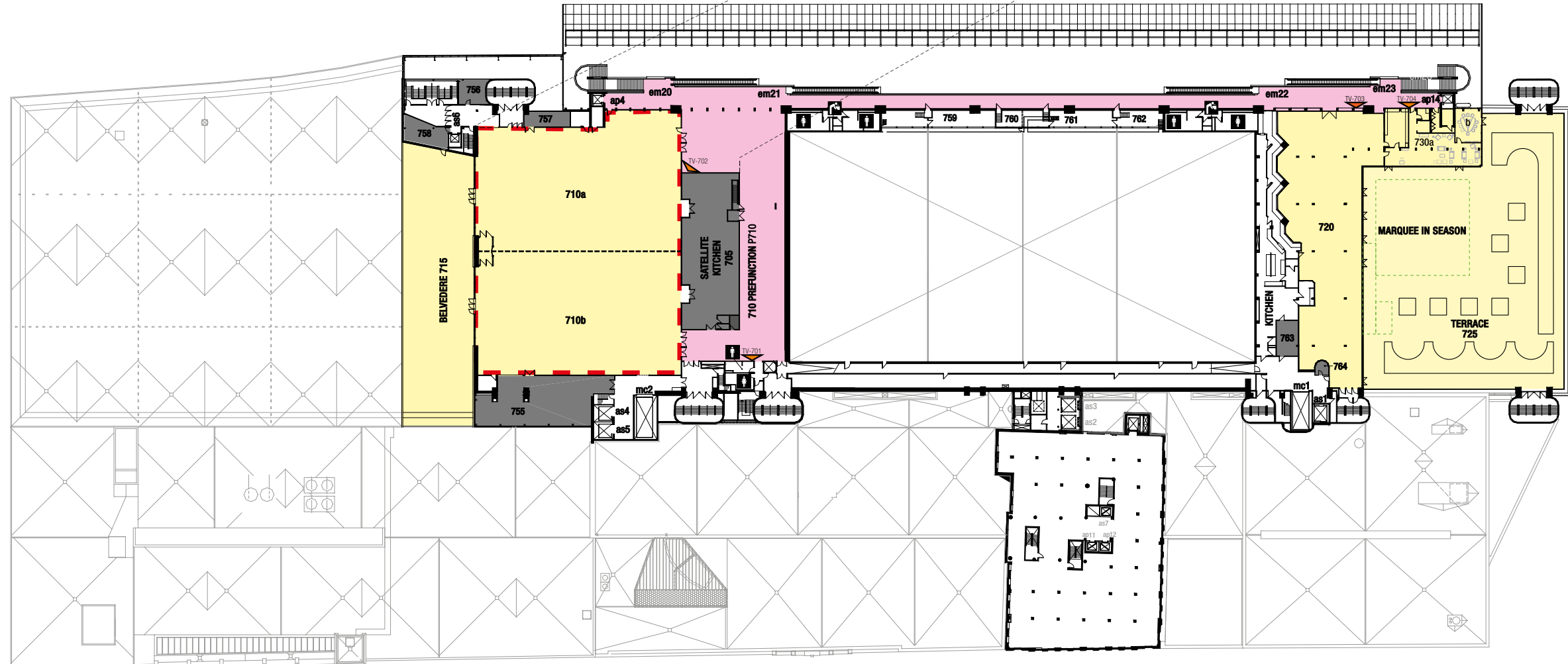
* The Ambassadors Lounge (730 VIP) houses a private kitchen, bathroom and cloakroom, couches with coffee tables, as well as a boardroom featuring a 52-inch plasma screen, an integrated projection system and a teleconferencing system.

Mezzanine 8

SPACES	Width (meters)	Length (meters)	Height (meters)	Width (feet)	Length (feet)	Height (feet)	Surface (square meters)	Surface (square feet)
Dressing Rooms								
810	2.5	3.3	2.4	8'4"	10'8"	7'8"	8	89
811	2.5	3.3	2.3	8'3"	10'8"	7'8"	8	89



MEZZANINE 8



Level 7

legend

- Men's washroom
- Possible area for registration
- Women's washroom
- Common areas / Rental Space - Optional
- Water fountains
- Rental Space
- Rail
- Ballroom
- ap: Public elevator
- Marquee in season
- as: Service elevator
- Exclusive use
- mc: Freight elevator
- em: Escalator

Note: Maximum capacities vary according to current regulations, room configuration and type of event, and should be interpreted on that basis as well as the total evacuation capacity per building level. Said capacities may differ when events are held simultaneously and if audiovisual considerations have to be factored in. Please note the figures are for information purposes and are subject to change without notice.