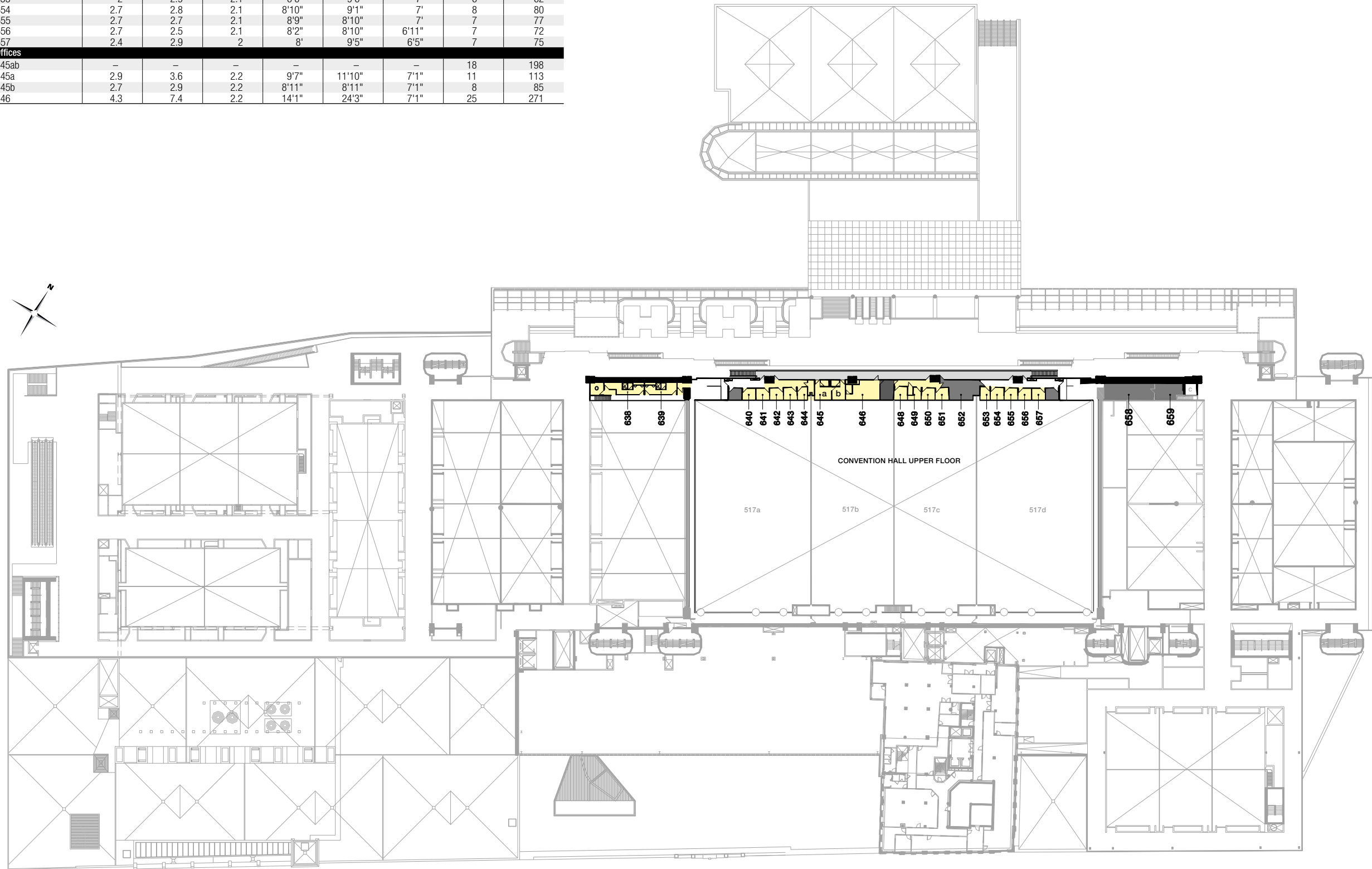


# Mezzanine 6

SPACES	Width (meters)	Length (meters)	Height (meters)	Width (feet)	Length (feet)	Height (feet)	Surface (square meters)	Surface (square feet)
<b>Dressing Rooms</b>								
638	2.6	8.6	2.1	8'5"	28'6"	6'11"	19	208
639	2.6	7	2.1	8'5"	22'11"	6'11"	18	193
<b>Simultaneous Translation Rooms</b>								
640	2.6	2.7	2.1	8'6"	9'	6'11"	7	77
641	2.5	2.7	2.1	8'2"	8'11"	6'11"	7	73
642	2.7	2.7	2.1	8'9"	8'10"	7'	7	77
643	2.7	2.8	2.1	8'9"	9'1"	7'	7	79
644	2	2.9	2.1	6'8"	9'6"	7'	6	63
648	2.7	2.7	2	8'8"	8'9"	6'7"	7	76
649	1.1	2.5	2.1	3'8"	8'	6'10"	3	29
650	2.4	2.7	2.1	8'10"	7'9"	6'10"	6	68
651	1.7	2.3	2.1	5'6"	7'	6'11"	4	39
653	2	2.9	2.1	6'6"	9'6"	7'	6	62
654	2.7	2.8	2.1	8'10"	9'1"	7'	8	80
655	2.7	2.7	2.1	8'9"	8'10"	7'	7	77
656	2.7	2.5	2.1	8'2"	8'10"	6'11"	7	72
657	2.4	2.9	2	8'	9'5"	6'5"	7	75
<b>Offices</b>								
645ab	-	-	-	-	-	-	18	198
645a	2.9	3.6	2.2	9'7"	11'10"	7'1"	11	113
645b	2.7	2.9	2.2	8'11"	8'11"	7'1"	8	85
646	4.3	7.4	2.2	14'1"	24'3"	7'1"	25	271



# Mezzanine 6

## legend

- Rental Space
- Common areas
- Exclusive use

Note: Maximum capacities vary according to current regulations, room configuration and type of event, and should be interpreted on that basis as well as the total evacuation capacity per building level. Said capacities may differ when events are held simultaneously and if audiovisual considerations have to be factored in. Please note the figures are for information purposes and are subject to change without notice.